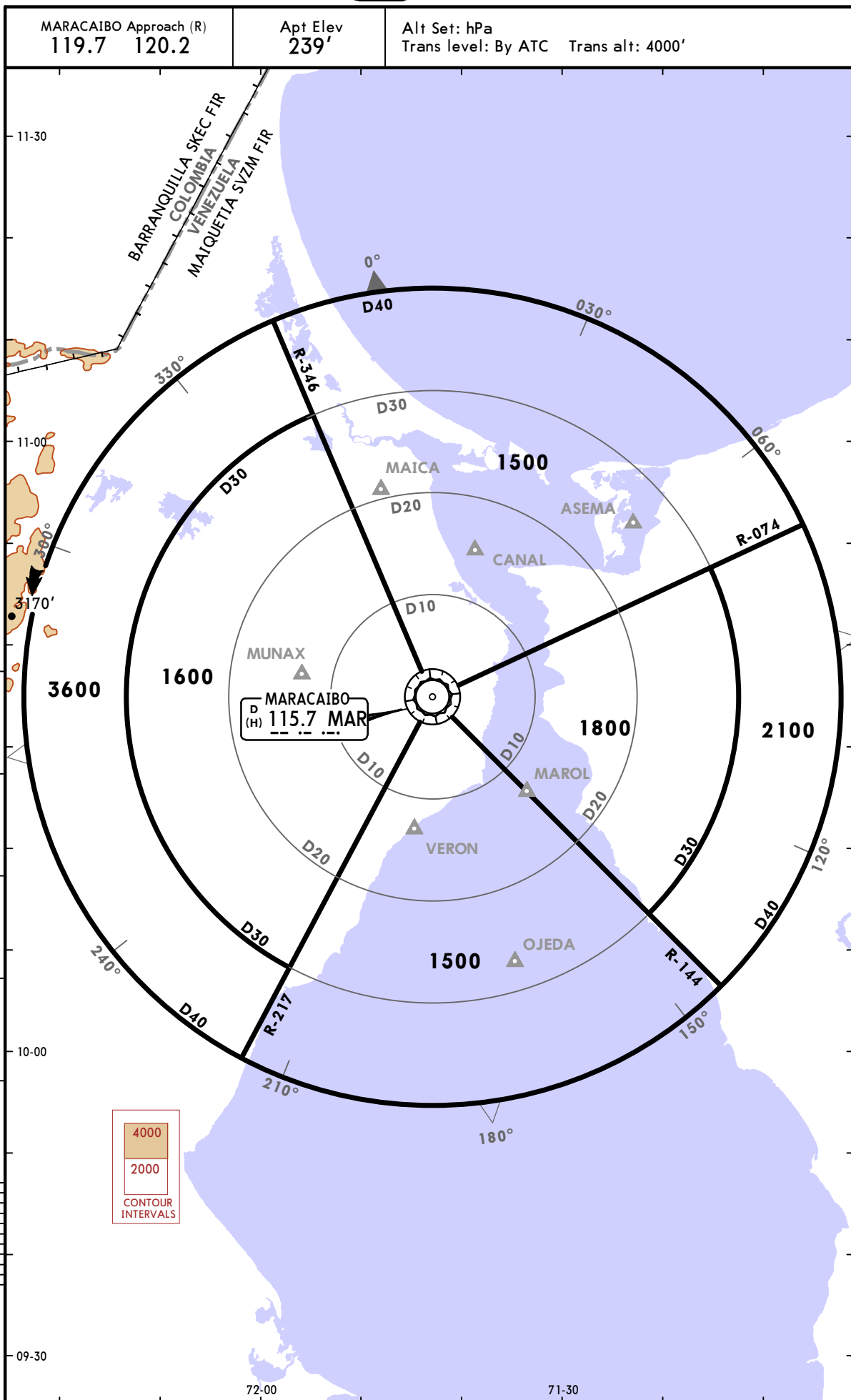


SVMC/MAR  
LA CHINITA INTL

JEPPESEN  
21 APR 17 (10-1R) Eff 27 Apr

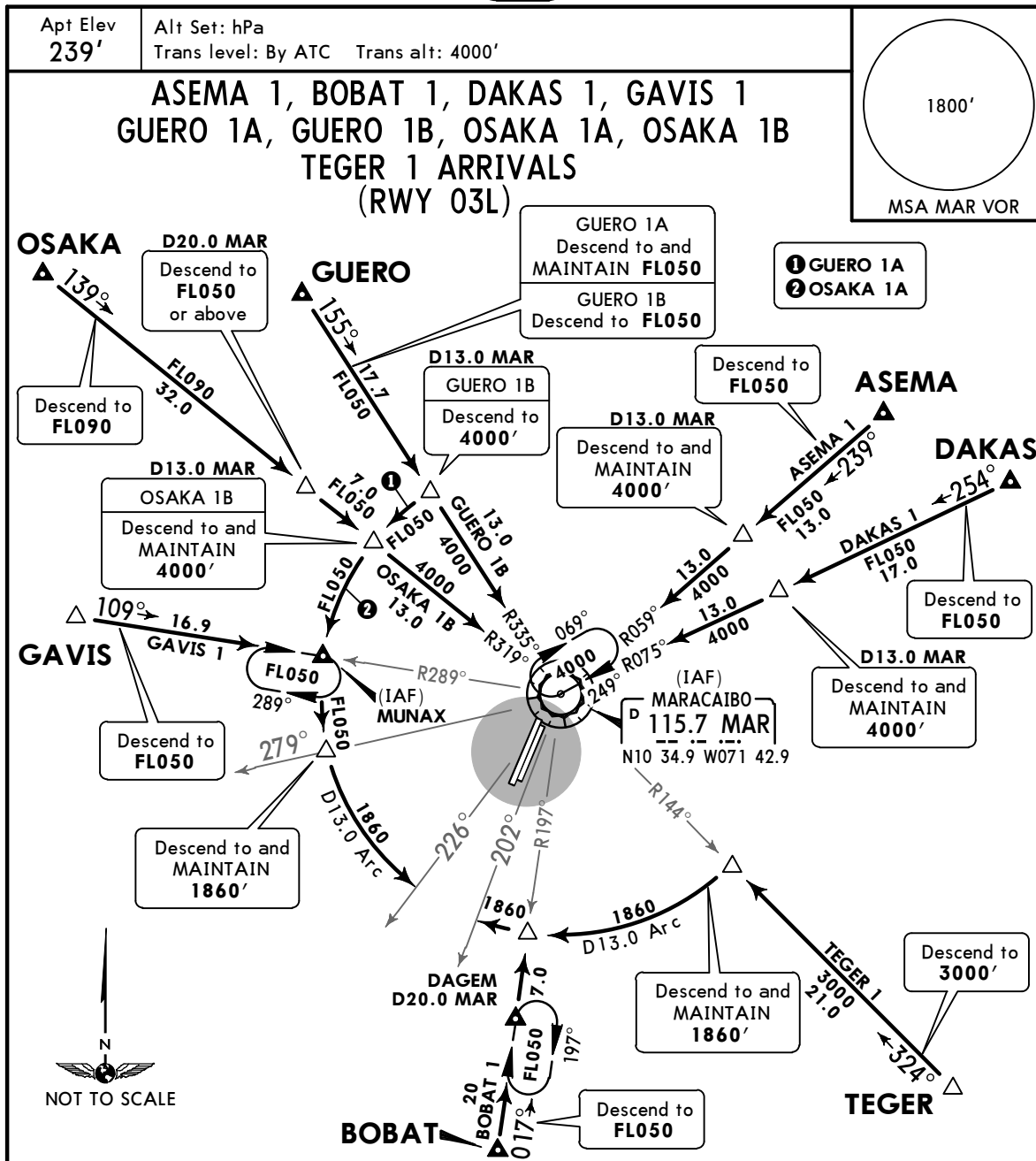
MARACAIBO, VENEZUELA  
RADAR MINIMUM ALTITUDES



CHANGES: Radials.

**SVMC/MAR**  
LA CHINITA INTL

**JEPPESSEN MARACAIBO, VENEZUELA**  
21 APR 17 **10-2** Eff 27 Apr **STAR**



STAR	ROUTING
<b>ASEMA 1</b> [ASEMA1]	On MAR R-059 descend to FL050. At D13.0 MAR descend to and MAINTAIN 4000' and follow ATC instructions.
<b>BOBAT 1</b> [BOBAT1]	On MAR R-197 descend to FL050 to DAGEM and follow ATC instructions.
<b>DAKAS 1</b> [DAKAS1]	On MAR R-075 descend to FL050. At D13.0 MAR descend to and MAINTAIN 4000' and follow ATC instructions.
<b>GAVIS 1</b> [GAVIS1]	On MAR R-289 descend to FL050 and intercept D13.0 Arc MAR. When crossing MAR R-279 descend to and MAINTAIN 1860'. When crossing MAR R-226 follow ATC instructions.
<b>GUERO 1A</b> [GUER1A]	On MAR R-335 descend to and MAINTAIN FL050. When crossing MAR R-279 descend to and MAINTAIN 1860'. When crossing MAR R-226 follow ATC instructions.
<b>GUERO 1B</b> [GUER1B]	On MAR R-335 descend to FL050. At D13.0 MAR descend to 4000' and follow ATC instructions.
<b>OSAKA 1A</b> [OSAK1A]	On MAR R-319 descend to FL090. At D20.0 MAR descend to FL050 or above. When crossing MAR R-279 descend to and MAINTAIN 1860'. When crossing MAR R-226 follow ATC instructions.
<b>OSAKA 1B</b> [OSAK1B]	On MAR R-319 descend to FL090. At D20.0 MAR descend to FL050 or above. At D13.0 MAR descend and MAINTAIN 4000' and follow ATC instructions.
<b>TEGER 1</b> [TEGER1]	On MAR R-144 descend to 3000' and intercept D13.0 Arc MAR and descend to and MAINTAIN 1860'. When crossing MAR R-202 follow ATC instructions.

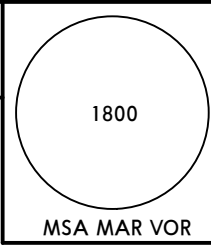
SVMC/MAR  
LA CHINITA INTL

JEPPESSEN  
20 OCT 17 10-3

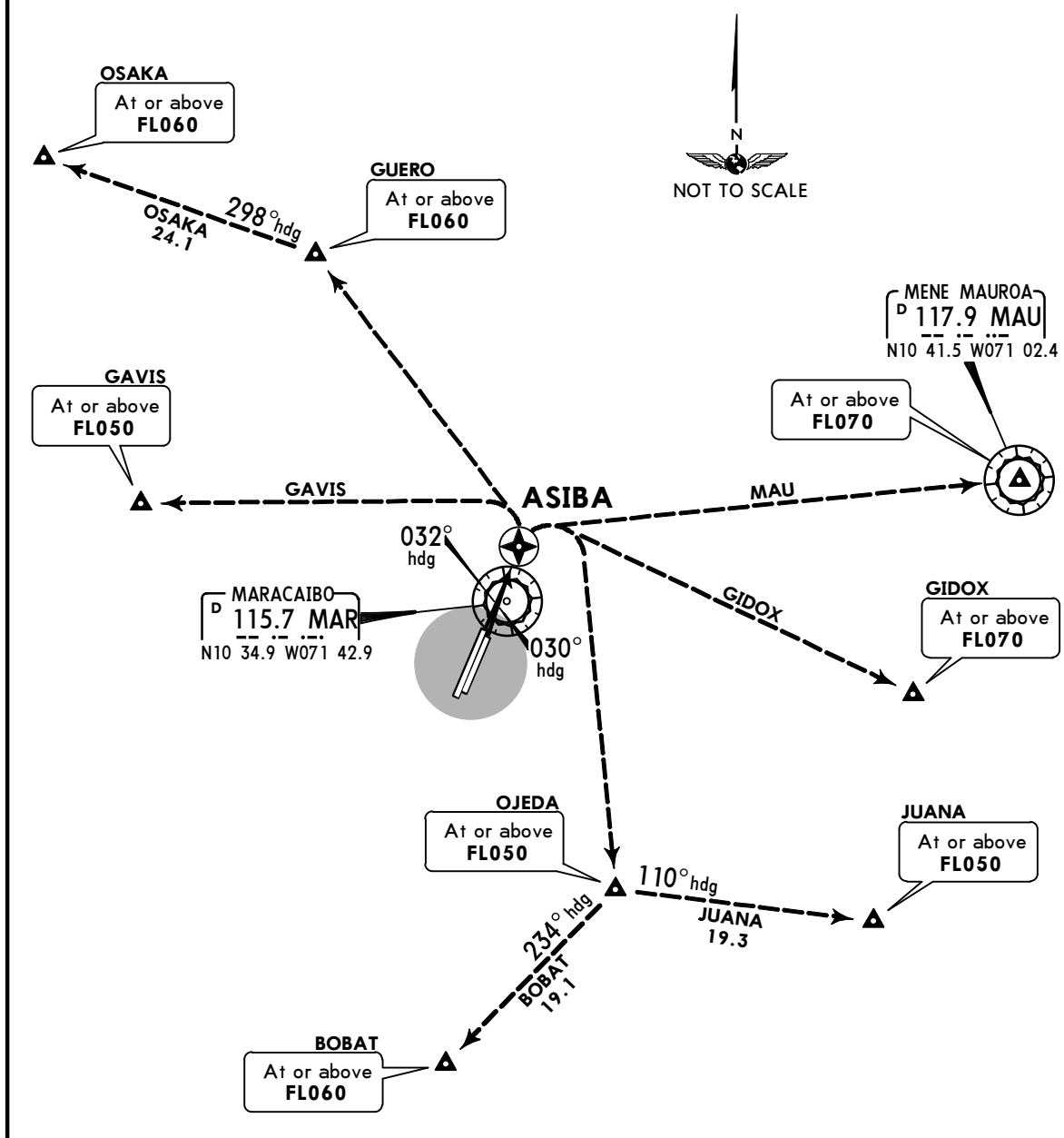
MARACAIBO, VENEZUELA

RNAV SID

Apt Elev <b>239'</b>	Trans level: By ATC GPS required.	Trans alt: 4000'
-------------------------	--------------------------------------	------------------



**ASIBA 1 DEPARTURE (RNAV)  
[ASIBA1]**



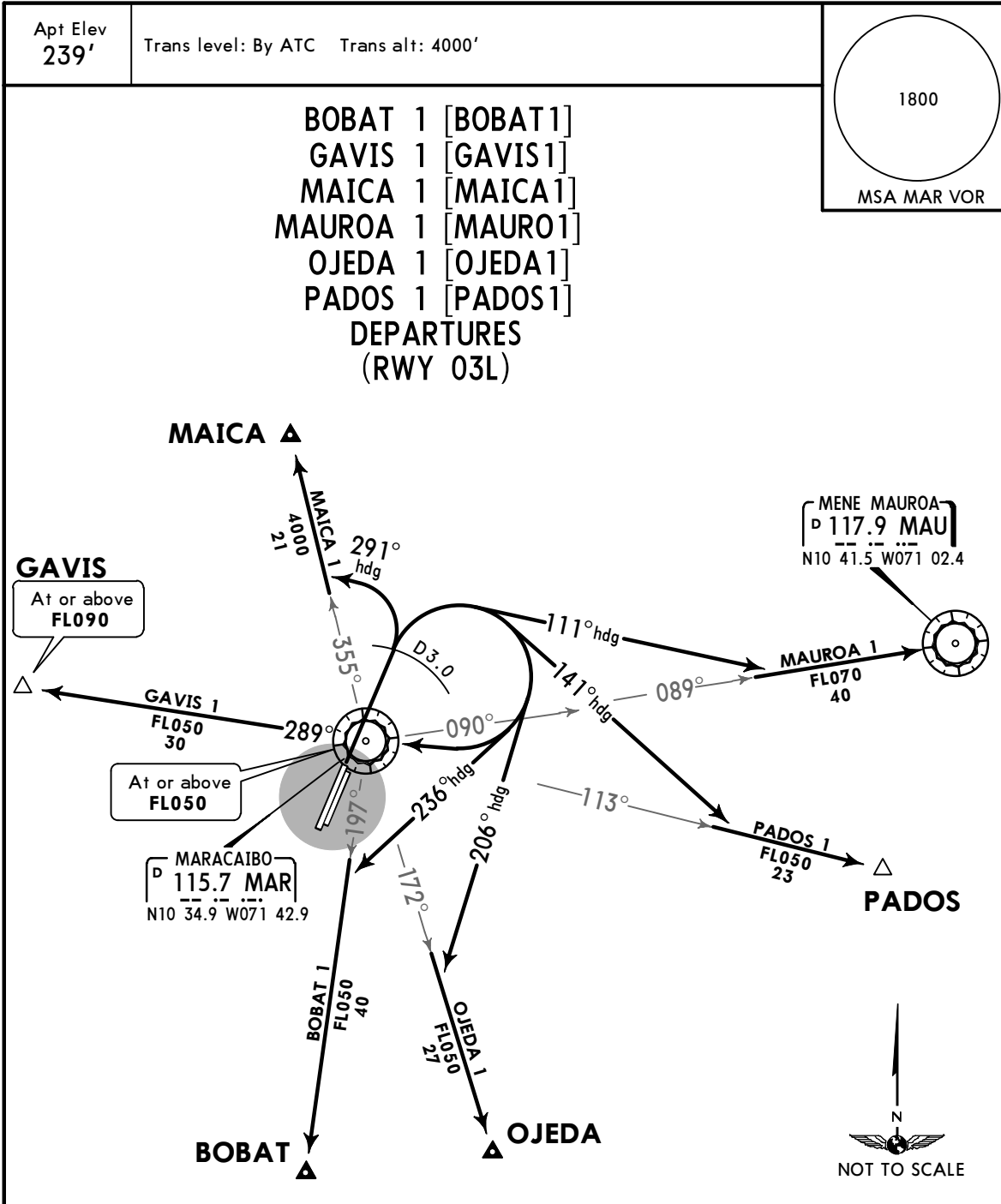
RWY	INITIAL CLIMB
03L	Climb via heading 032° to ASIBA then via transition.
03R	Climb via heading 030° to ASIBA then via transition.
TRANSITIONS	
BOBAT	From over ASIBA turn RIGHT direct OJEDA, then via heading 234° to BOBAT at or above FL060.
GAVIS	From over ASIBA turn LEFT direct GAVIS at or above FL050.
GIDOX	From over ASIBA turn RIGHT direct GIDOX at or above FL070.
JUANA	From over ASIBA turn RIGHT direct OJEDA, then via heading 110° to JUANA at or above FL050.
MAU	From over ASIBA turn RIGHT direct MAU VOR at or above FL070.
OSAKA	From over ASIBA turn LEFT direct GUERO, then via heading 298° to OSAKA at or above FL060.

SVMC/MAR  
LA CHINITA INTL

JEPPESSEN  
20 OCT 17 (10-3A)

MARACAIBO, VENEZUELA

SID



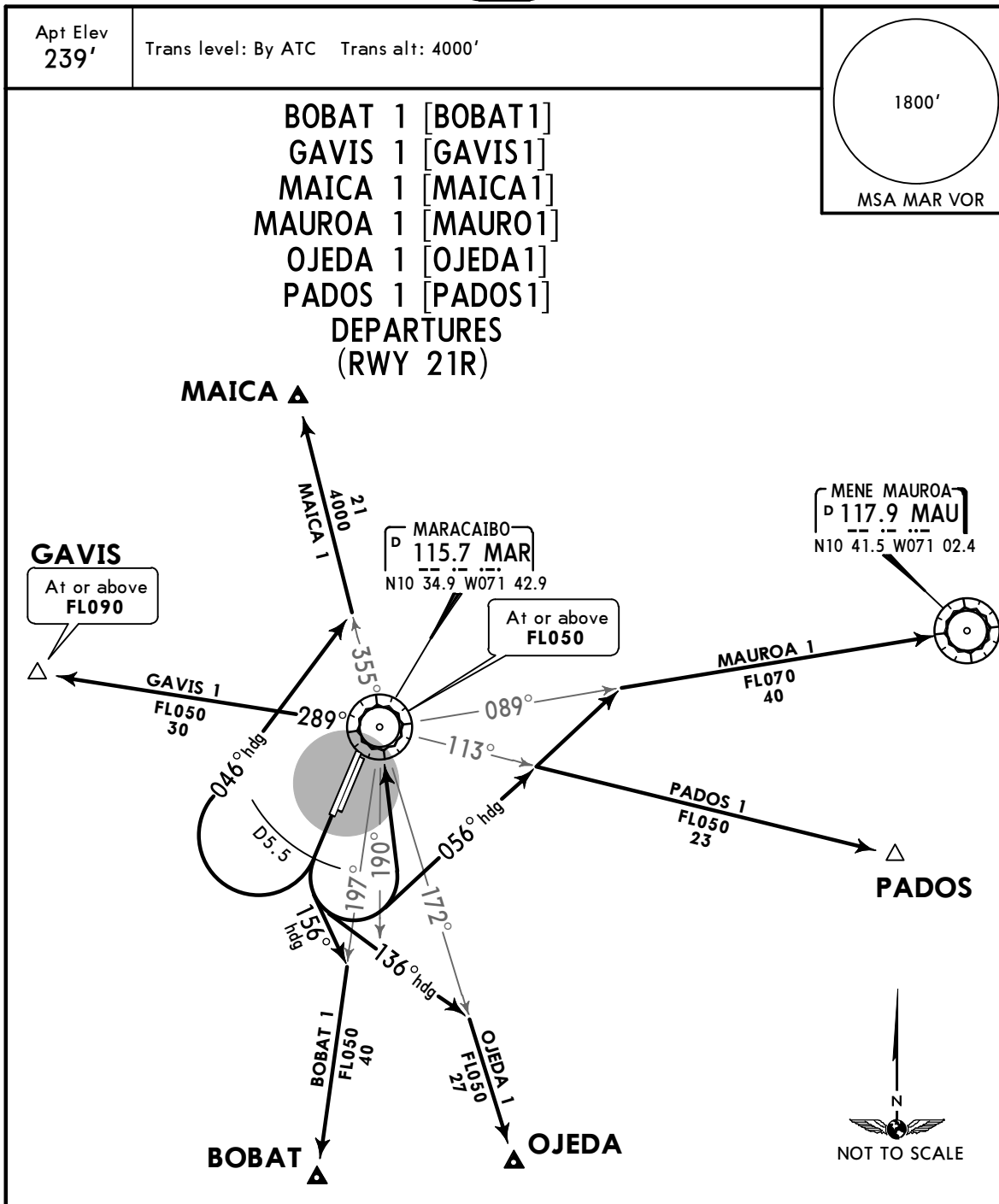
SID	INITIAL CLIMB
BOBAT 1	MAINTAIN runway heading, climb to 3000'. At D3.0 MAR turn RIGHT heading 236°, intercept and follow MAR R-197. Continue climb to 4000' or follow ATC instructions.
GAVIS 1	MAINTAIN runway heading, climb to 3000'. At D3.0 MAR turn RIGHT direct to MAR VOR. When crossing MAR R-090 continue climb to FL050 or above. Over MAR VOR, intercept and follow MAR R-289 direct to cross GAVIS at or above FL090.
MAICA 1	MAINTAIN runway heading, climb to 4000'. At D3.0 MAR, turn LEFT heading 291°, intercept and follow MAR R-355. Continue climb to FL050 or follow ATC instructions.
MAUROA 1	MAINTAIN runway heading, climb to 3000'. At D3.0 MAR, turn RIGHT heading 111°, intercept and follow MAR R-089. Continue climb to FL070 or follow ATC instructions.
OJEDA 1	MAINTAIN runway heading, climb to 3000'. At D3.0 MAR, turn RIGHT heading 206°, intercept and follow MAR R-172. Continue climb to FL050 or follow ATC instructions.
PADOS 1	MAINTAIN runway heading, climb to 3000'. At D3.0 MAR, turn RIGHT heading 141°, intercept and follow MAR R-113. Continue climb to FL050 or follow ATC instructions.

CHANGES: MAICA 1 MEA.

© JEPPESSEN, 2009, 2017. ALL RIGHTS RESERVED.

**SVMC/MAR**  
LA CHINITA INTL

**JEPPESEN MARACAIBO, VENEZUELA**  
21 APR 17 **10-3B** Eff 27 Apr **SID**

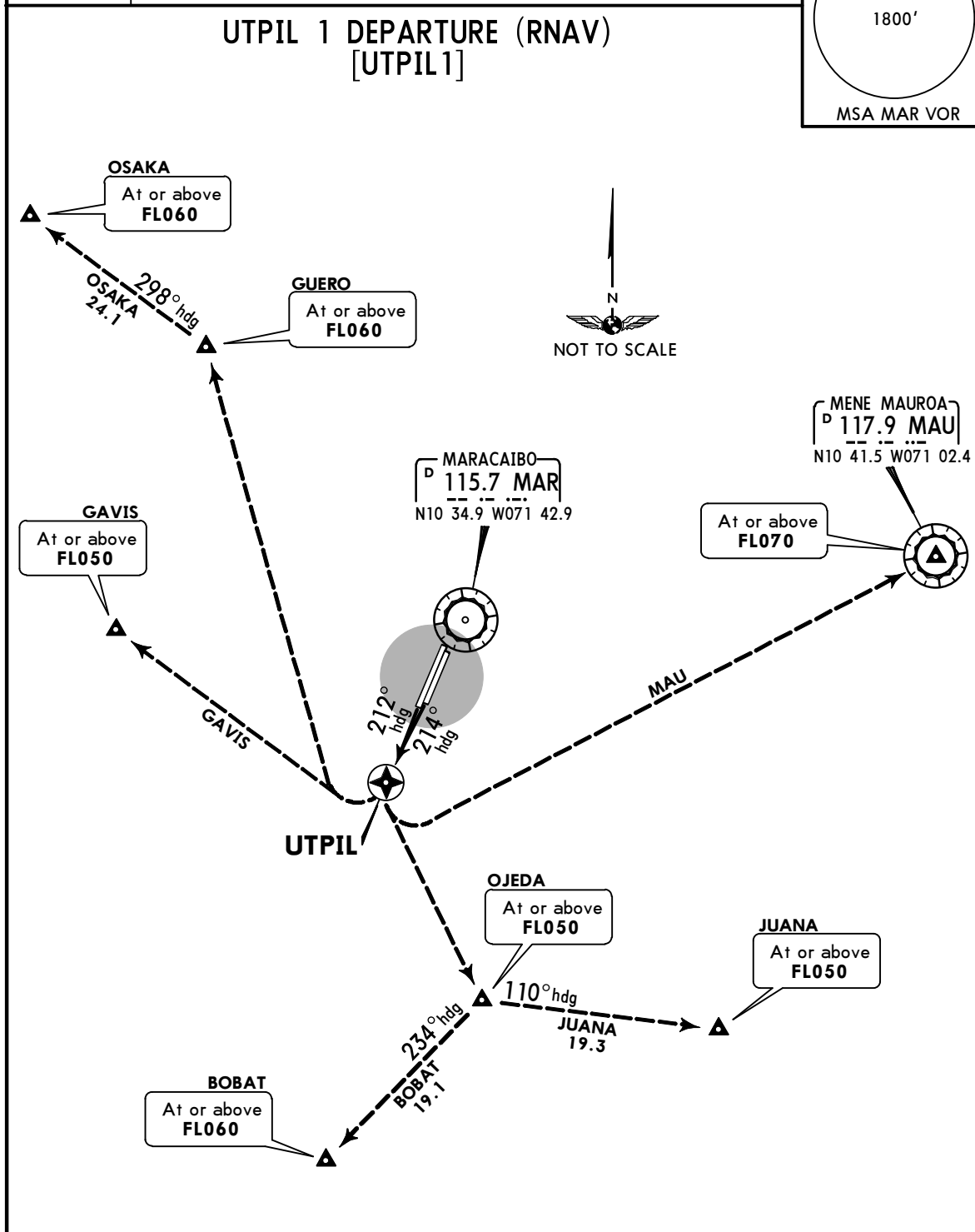


SID	INITIAL CLIMB
<b>BOBAT 1</b>	MAINTAIN runway heading, climb to 4000', at D5.5 MAR, turn LEFT heading 156° intercept and follow MAR R-197. Continue climb to FL050 or follow ATC instructions.
<b>GAVIS 1</b>	MAINTAIN runway heading, climb to 4000', at D5.5 MAR, turn LEFT direct to MAR VOR, when crossing MAR R-190 continue climb to FL050 or above over MAR VOR, intercept and follow MAR R-289 direct to cross GAVIS at or above FL090.
<b>MAICA 1</b>	MAINTAIN runway heading, climb to 4000', at D5.5 MAR, turn RIGHT heading 046°, intercept and follow MAR R-355. Continue climb to FL050 or follow ATC instructions.
<b>MAUROA 1</b>	MAINTAIN runway heading, climb to 4000', at D5.5 MAR, turn LEFT heading 056°, intercept and follow MAR R-089. Continue climb to FL070 or follow ATC instructions.
<b>OJEDA 1</b>	MAINTAIN runway heading, climb to 4000', at D5.5 MAR, turn LEFT heading 136°, intercept and follow MAR R-172. Continue climb to FL050 or follow ATC instructions.
<b>PADOS 1</b>	MAINTAIN runway heading, climb to 4000', at D5.5 MAR, turn LEFT heading 056°, intercept and follow MAR R-113. Continue climb to FL050 or follow ATC instructions.

**SVMC/MAR**  
LA CHINITA INTL

**JEPPESEN MARACAIBO, VENEZUELA**  
21 APR 17 **10-3C** Eff 27 Apr **RNAV SID**

Apt Elev <b>239'</b>	Trans level: By ATC GPS required.	Trans alt: 4000'	
<b>UTPIL 1 DEPARTURE (RNAV)</b> [UTPIL1]			



<b>RWY</b>	<b>INITIAL CLIMB</b>
<b>21L</b>	Climb via heading 214° to UTPIL then via transition.
<b>21R</b>	Climb via heading 212° to UTPIL then via transition.
<b>TRANSITIONS</b>	
<b>BOBAT</b>	From over UTPIL turn LEFT direct OJEDA, then via heading 234° to BOBAT at or above FL060.
<b>GAVIS</b>	From over UTPIL turn RIGHT direct GAVIS at or above FL050.
<b>JUANA</b>	From over UTPIL turn LEFT direct OJEDA, then via heading 110° to JUANA at or above FL050.
<b>MAU</b>	From over UTPIL turn LEFT direct MAU VOR at or above FL070.
<b>OSAKA</b>	From over UTPIL turn RIGHT direct GUERO, then via heading 298° to OSAKA at or above FL060.

CHANGES: Bearings, MSA.

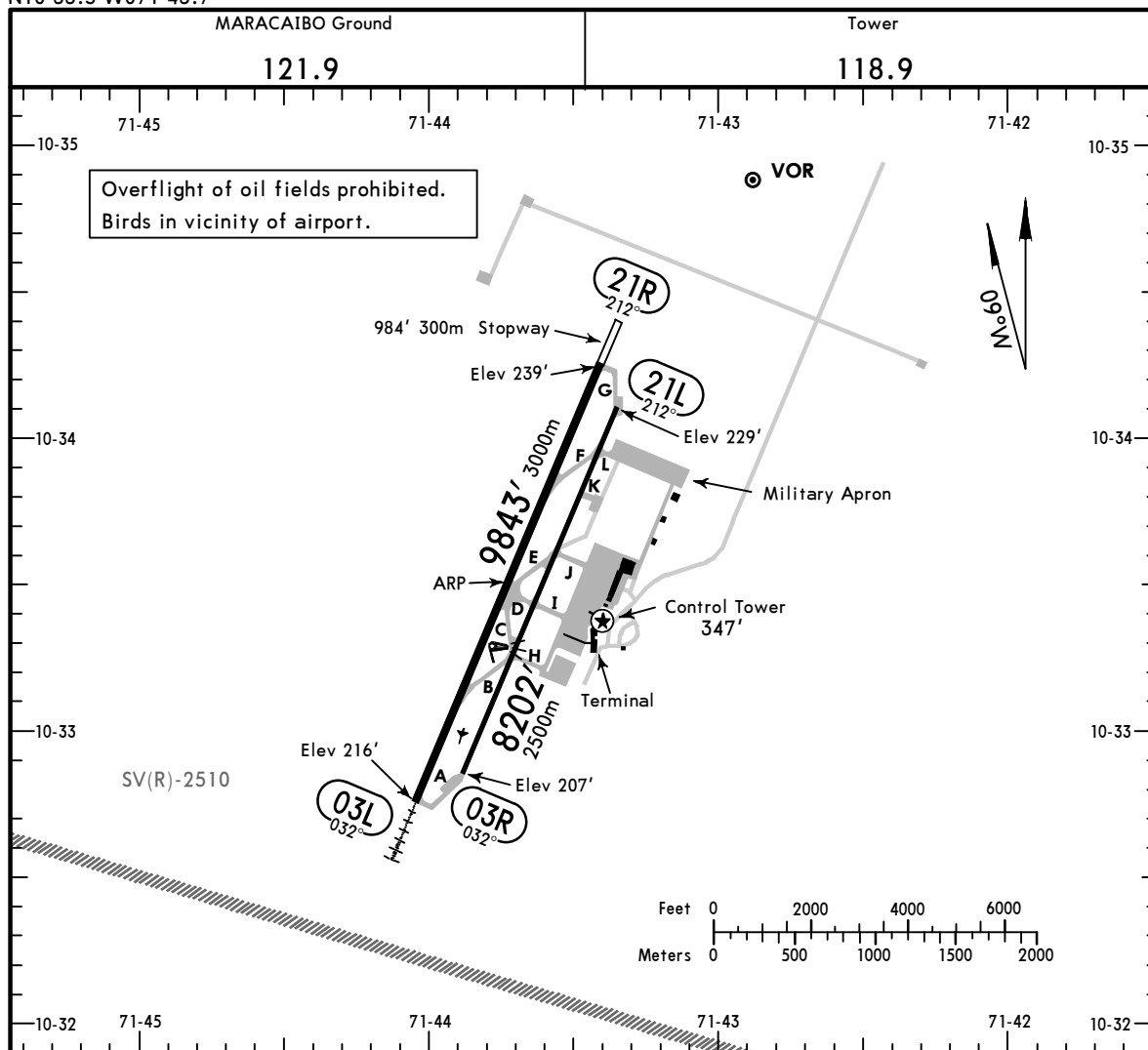
# SVMC/MAR

Apt Elev **239'**  
N10 33.5 W071 43.7

# JEPPESEN MARACAIBO, VENEZUELA

21 APR 17 **(10-9)** Eff 27 Apr

LA CHINITA INTL



### ADDITIONAL RUNWAY INFORMATION

RWY		USABLE LENGTHS			WIDTH
		Threshold	Landing Beyond Glide Slope	TAKE-OFF	
03R ① 21L	② RL PAPI-L (angle 3.0°)				98' 30m
	② RL				
03L 21R	RL CL ALS PAPI-L (angle 3.0°)		9820' 2993m		148' 45m
	RL CL				

- ① For emergency & taxi only. Available for operations during shutdown of Rwy 03L-21R.
- ② For emergency & taxi only.

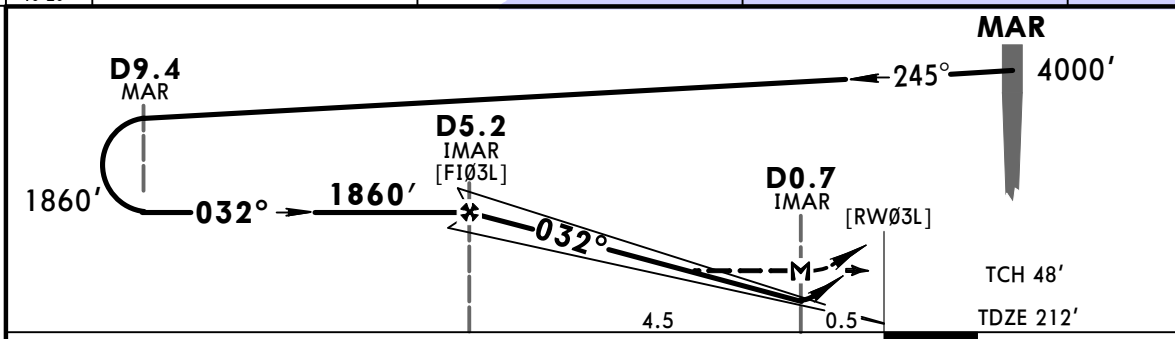
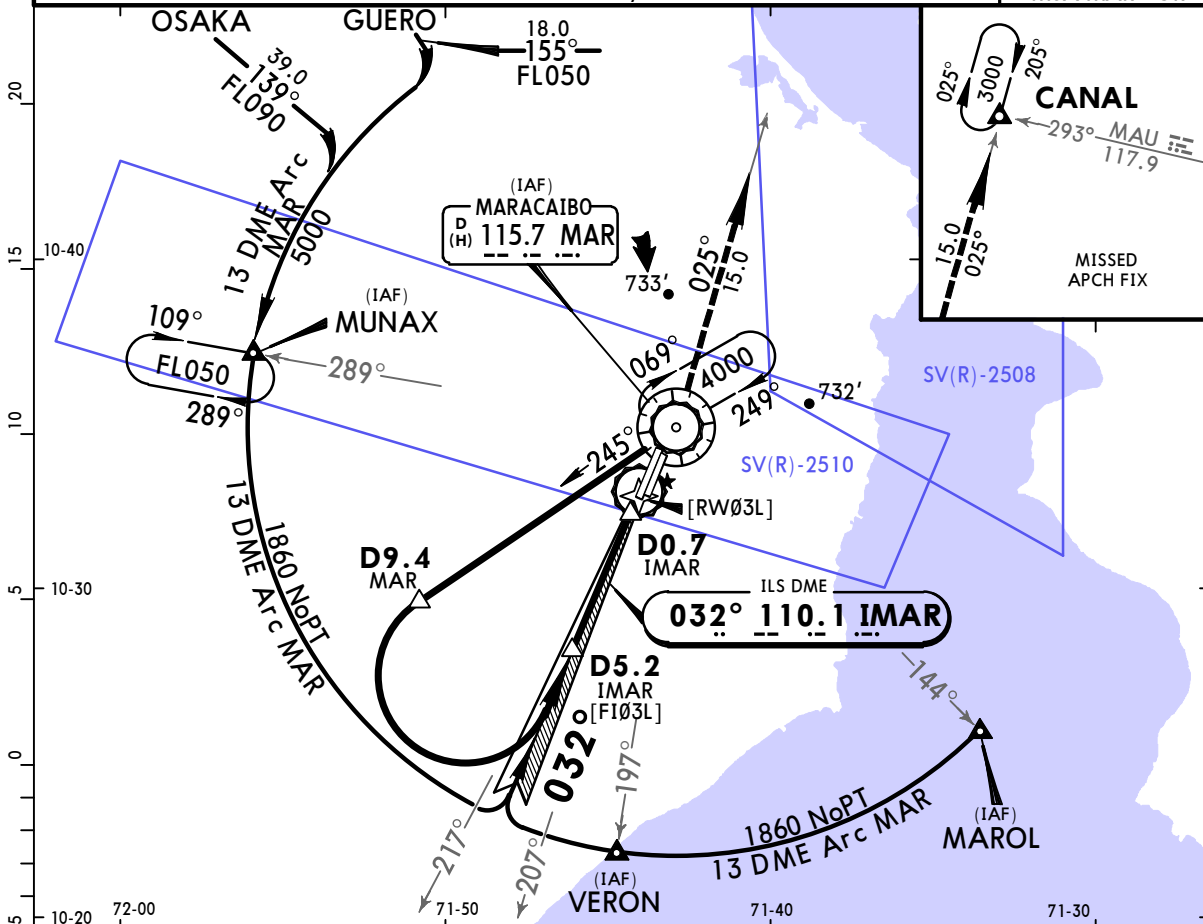
	TAKE-OFF	FOR FILING AS ALTERNATE
	All Rwys	
1 & 2 Eng	1.6 km	A B C D 800' -3.2 km
3 & 4 Eng	800m	

# SVMC/MAR

LA CHINITA INTL

**JEPPESSEN MARACAIBO, VENEZUELA**  
 21 APR 17 **(11-1)** Eff 27 Apr ILS DME Rwy 03L

MARACAIBO Approach		MARACAIBO Tower		Ground	
119.7 120.2		118.9		121.9	
LOC IMAR <b>110.1</b>	Final Apch Crs <b>032°</b>	Minimum Alt <b>D5.2 IMAR</b> 1860' (1648')	ILS DA(H) <b>472'</b> (260')	Apt Elev <b>239'</b>	1800'
MISSED APCH: Climb to 3000' outbound on MAR VOR R-025 to CANAL and hold or as directed by ATC.				TDZE <b>212'</b>	
Alt Set: hPa		TDZ Elev: 8 hPa		Trans level: By ATC	
				Trans alt: 4000'	
					MSA MAR VOR



Gnd speed-Kts	70	90	100	120	140	160	ALS PAPI	3000' on MAR R-025 CANAL
GS	3.00°	372	478	531	637	849		
MAP at D0.7 IMAR or D5.2 IMAR to MAP	4.5	3:51	3:00	2:42	2:15	1:56	1:41	

STRAIGHT-IN LANDING RWY 03L		CIRCLE-TO-LAND	
ILS DA(H) <b>472'</b> (260')		LOC (GS out) MDA(H) <b>530'</b> (318')	
FULL	ALS out	ALS out	ALS out
A		1.2 km	1.6 km
B			
C	800m	1200m	1.6 km
D			1.6 km
			Max Kts   MDA(H)
			100   680'(441') - 1.6 km
			135   740'(501') - 1.6 km
			180   830'(591') - 2.4 km
			205   930'(691') - 3.6 km

CHANGES: MSA, bearings, CNFs.

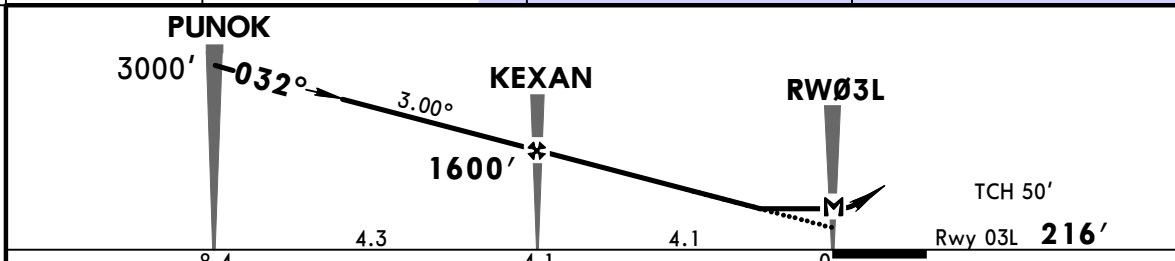
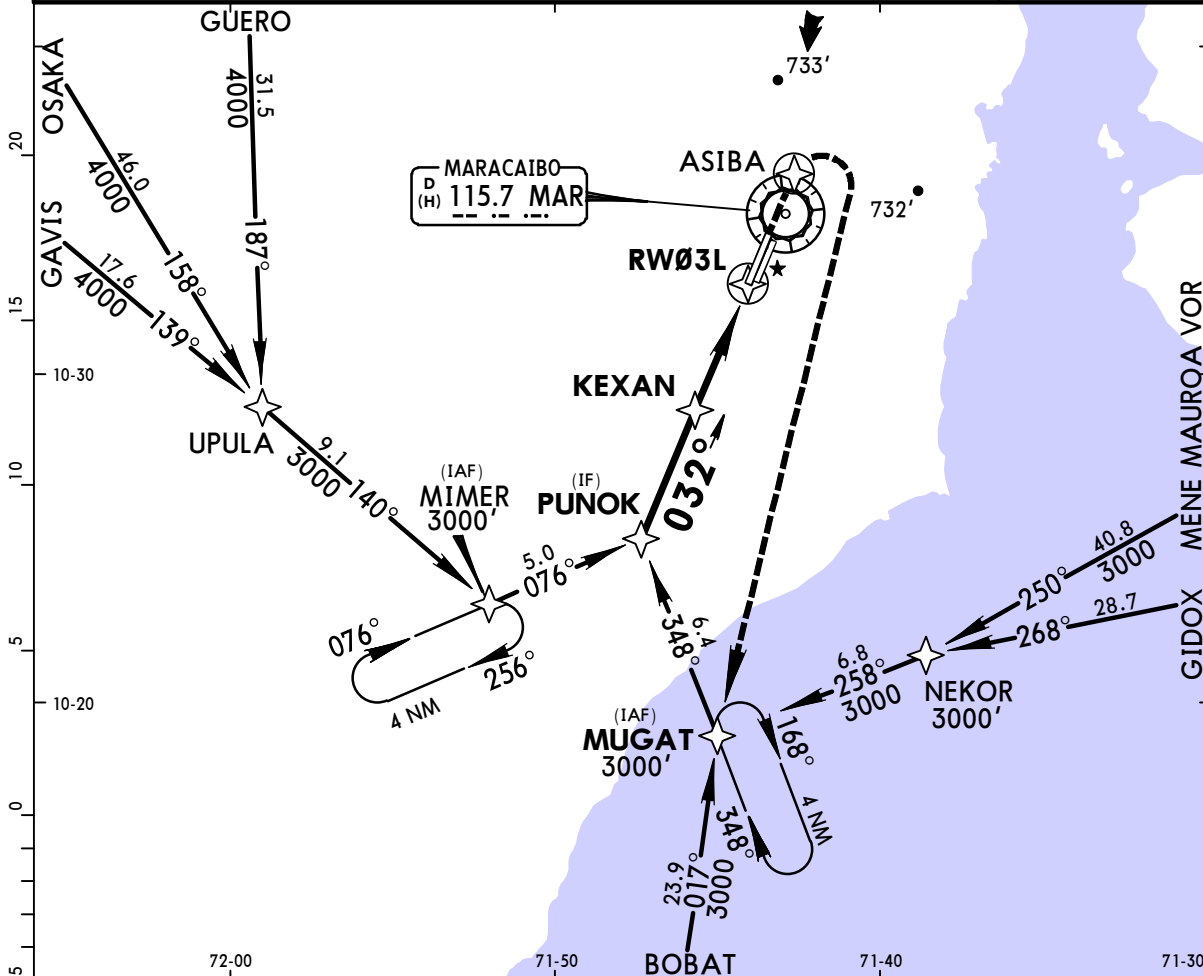


**SVMC/MAR**  
**LA CHINITA INTL**

**JEPPESEN**  
21 APR 17  
Eff 27 Apr (12-1)

**MARACAIBO, VENEZUELA**  
**RNAV (GNSS) Y Rwy 03L**

MARACAIBO Approach 119.7 120.2		MARACAIBO Tower 118.9		Ground 121.9	
RNAV	Final Apch Crs <b>032°</b>	Minimum Alt <b>KEXAN</b> 1600' (1384')	LNAV MDA(H) <b>560' (344')</b>	Apt Elev <b>239'</b>	1800'
Rwy 03L <b>216'</b>					
<b>MISSED APCH: Climb to 4000' direct ASIBA then climbing RIGHT turn direct MUGAT and hold.</b>					
Alt Set: hPa Rwy Elev: 8 hPa Trans level: By ATC Trans alt: 4000'					
1. GPS required. 2. Procedure not authorized when using remote altimeter setting. 3. DME-DME not authorized.					
					MSA MAR VOR



Gnd speed-Kts	70	90	100	120	140	160	ALS 4000'	PAPI ASIBA	
Descent Angle	3.00°	372	478	531	637	743			849
MAP at RW03L									

<b>STRAIGHT-IN LANDING RWY 03L</b>	
LNAV	
MDA(H) <b>560' (344')</b>	
ALS out	
A	1.2 km
B	1.6 km
C	
D	1.6 km

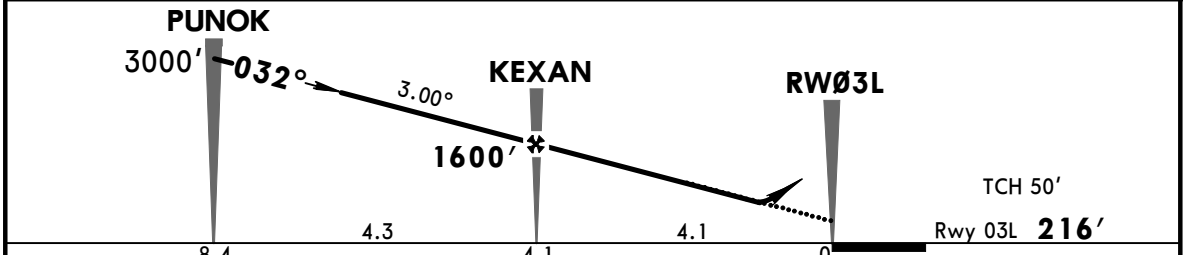
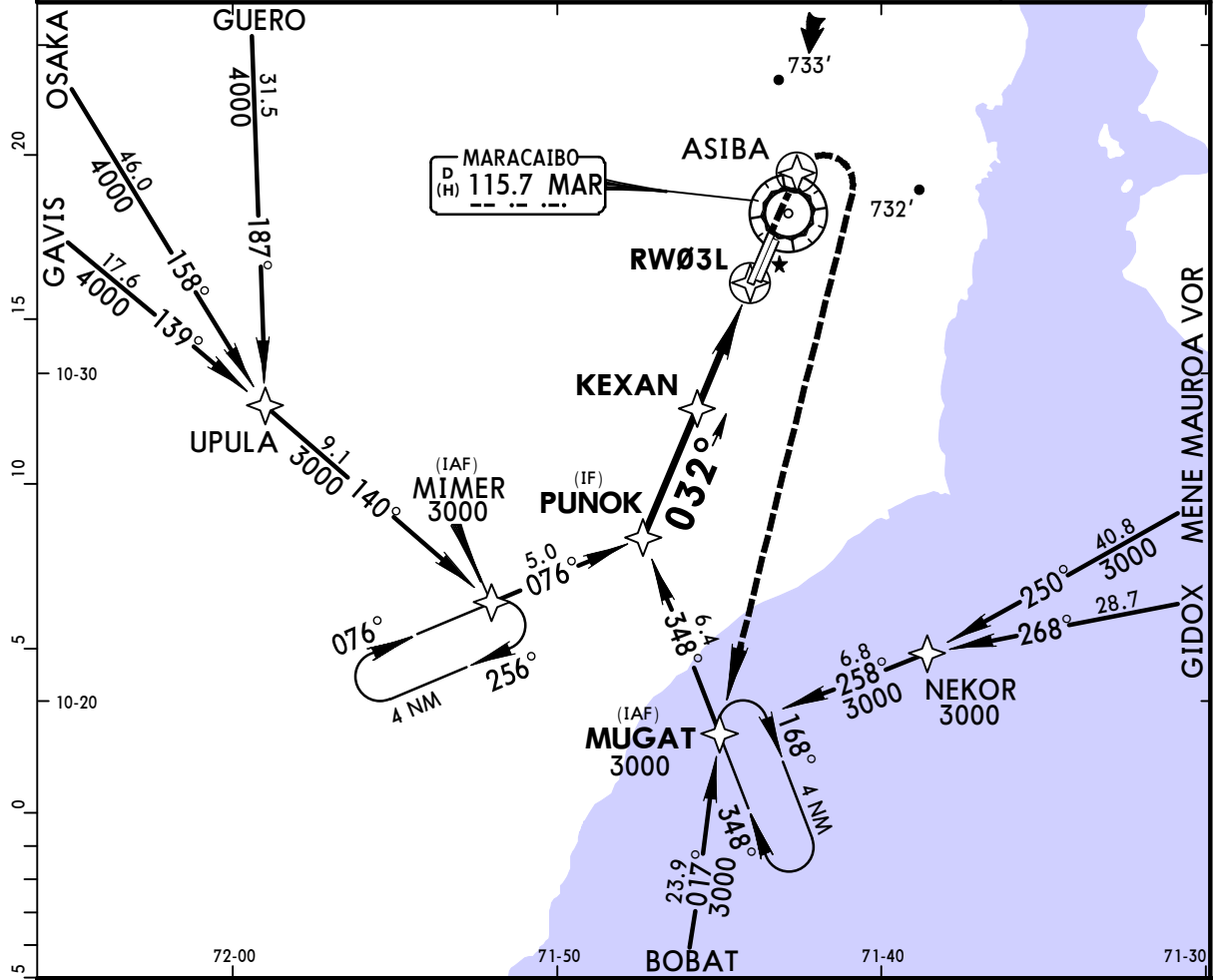
CHANGES: MSA, bearings.

**SVMC/MAR**  
**LA CHINITA INTL**

**JEPPESEN**  
 21 APR 17  
 Eff 27 Apr **(12-2)**

**MARACAIBO, VENEZUELA**  
**RNAV (GNSS) Z Rwy 03L**

MARACAIBO Approach 119.7 120.2		MARACAIBO Tower 118.9		Ground 121.9	
RNAV	Final Apch Crs <b>032°</b>	Minimum Alt <b>KEXAN</b> 1600' (1384')	LNAV/VNAV DA(H) <b>551' (335')</b>	Apt Elev <b>239'</b>	1800'  MSA MAR VOR
<b>MISSED APCH:</b> Climb to 4000' direct ASIBA then climbing RIGHT turn direct MUGAT and hold.					
Alt Set: hPa    Rwy Elev: 8 hPa    Trans level: By ATC    Trans alt: 4000' 1. <b>GPS required.</b> 2. Procedure not authorized when using remote altimeter setting. 3. DME-DME not authorized.					



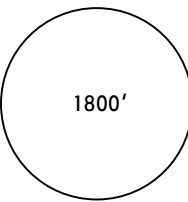
STRAIGHT-IN LANDING RWY 03L LNAV/VNAV DA(H) <b>551' (335')</b>		ALS out
A	1.2 km	1.6 km
B		
C		
D		

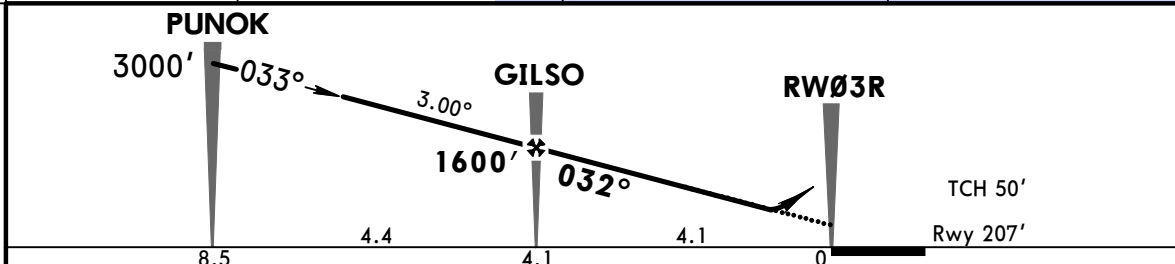
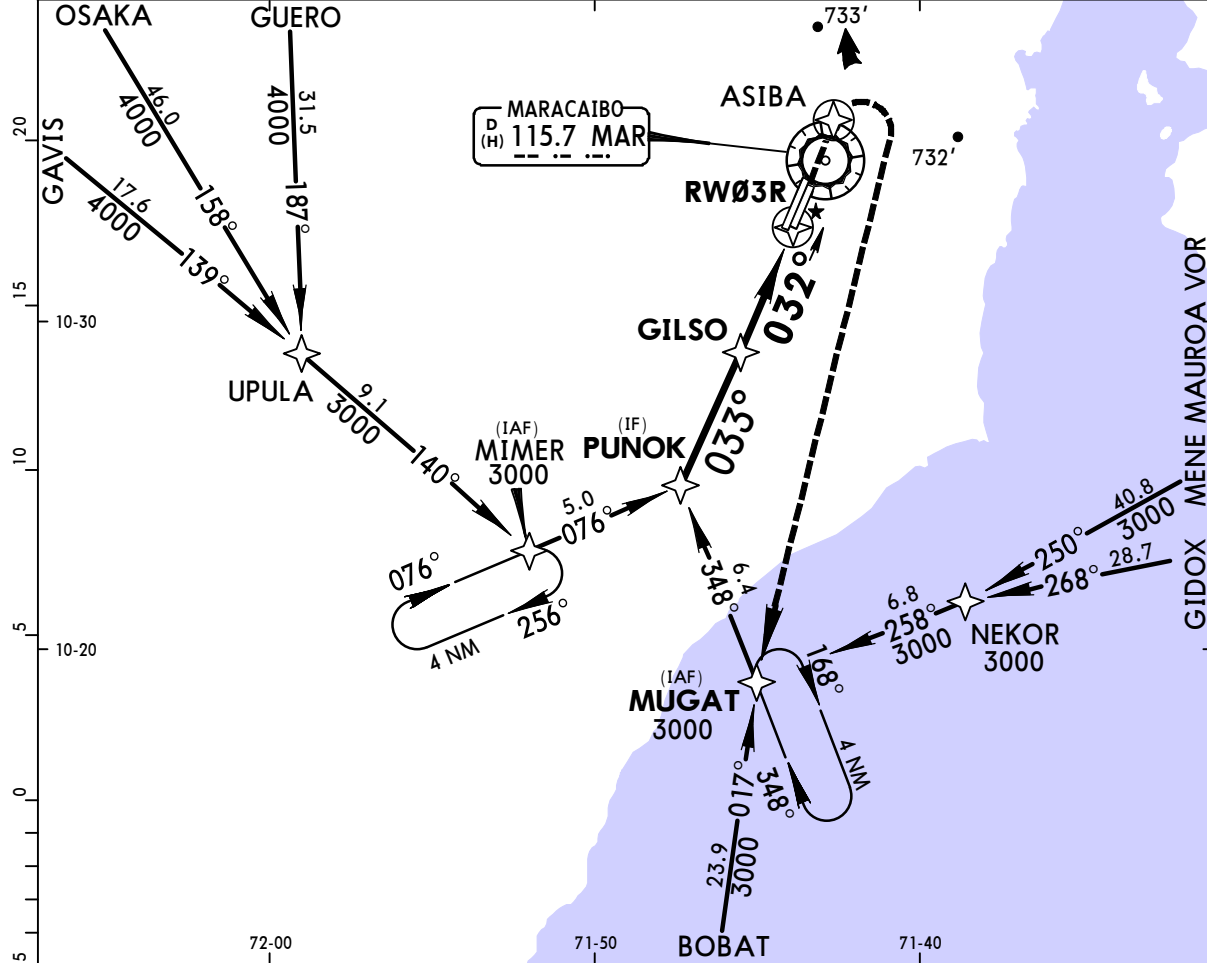
CHANGES: MSA, bearings.

**SVMC/MAR**  
**LA CHINITA INTL**

**JEPPESEN**  
21 APR 17  
Eff 27 Apr (12-3)

**MARACAIBO, VENEZUELA**  
**RNAV (GNSS) Rwy 03R**

MARACAIBO Approach		MARACAIBO Tower		Ground	
119.7		120.2		118.9	
121.9					
RNAV	Final Apch Crs <b>032°</b>	Minimum Alt <b>GILSO</b> <b>1600'</b> (1393')	LNAV/VNAV DA(H) <b>551'</b> (344')	Apt Elev 239'	 1800' MSA MAR VOR
<b>MISSED APCH:</b> Climb to 4000' direct ASIBA then climbing RIGHT turn direct MUGAT and hold.					
Alt Set: hPa    Rwy Elev: 8 hPa    Trans level: By ATC    Trans alt: 4000' 1. <b>GPS required.</b> 2. Procedure not authorized when using remote altimeter setting. 3. DME-DME not authorized.					



Gnd speed-Kts	70	90	100	120	140	160	PAPI-L	4000'	D→	ASIBA	
Descent Angle	3.00°	372	478	531	637	743					849
MAP at DA											

**STRAIGHT-IN LANDING RWY 03R**  
**LNAV/VNAV**  
DA(H) **551'** (344')

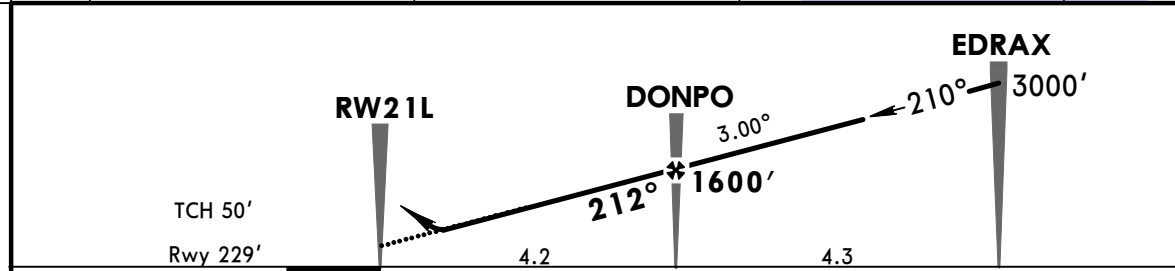
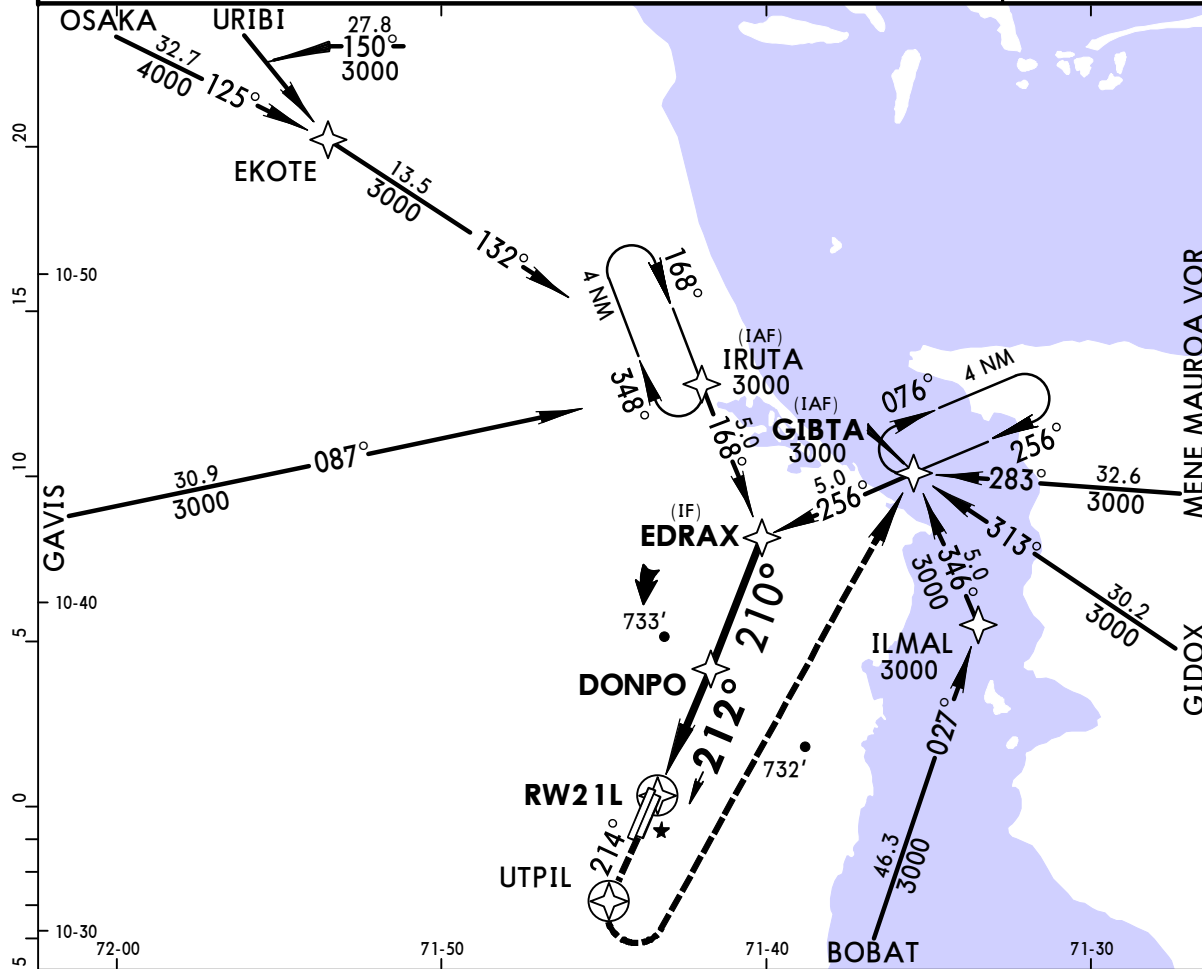
A	1.6 km
B	
C	
D	

**SVMC/MAR**  
LA CHINITA INTL

**JEPPESEN**  
21 APR 17  
Eff 27 Apr (12-4)

**MARACAIBO, VENEZUELA**  
RNAV (GNSS) Rwy 21L

MARACAIBO Approach 119.7 120.2		MARACAIBO Tower 118.9		Ground 121.9	
RNAV	Final Apch Crs <b>212°</b>	Minimum Alt <b>DONPO</b> 1600' (1371')	LNAV/VNAV DA(H) <b>608' (379')</b>	Apt Elev 239' Rwy 229'	
<b>MISSED APCH: Climb via course 214° direct UTPIL then climbing LEFT turn direct GIBTA at 4000' and hold.</b>					1800'
Alt Set: hPa    Rwy Elev: 8 hPa    Trans level: By ATC    Trans alt: 4000' 1. <b>GPS required.</b> 2. Procedure not authorized when using remote altimeter setting. 3. DME-DME not authorized.					
MSA SVMC					



Gnd speed-Kts	70	90	100	120	140	160	↑ via 214°	↻ UTPIL
Descent Angle 3.00°	372	478	531	637	743	849		
MAP at DA								

**STRAIGHT-IN LANDING RWY 21L**  
LNAV/VNAV  
DA(H) **608' (379')**

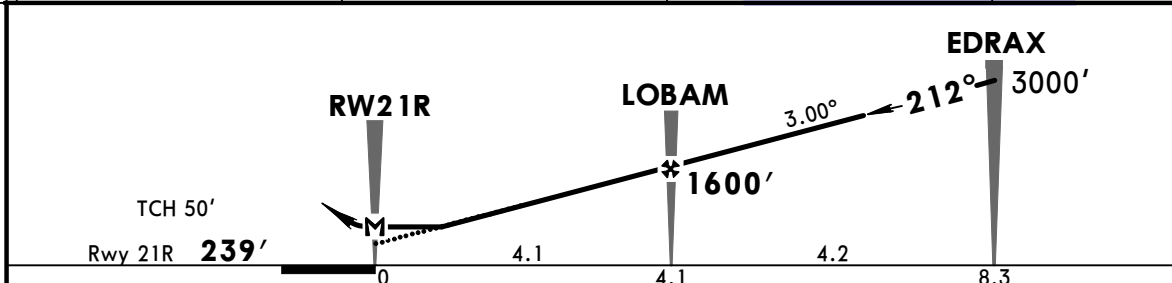
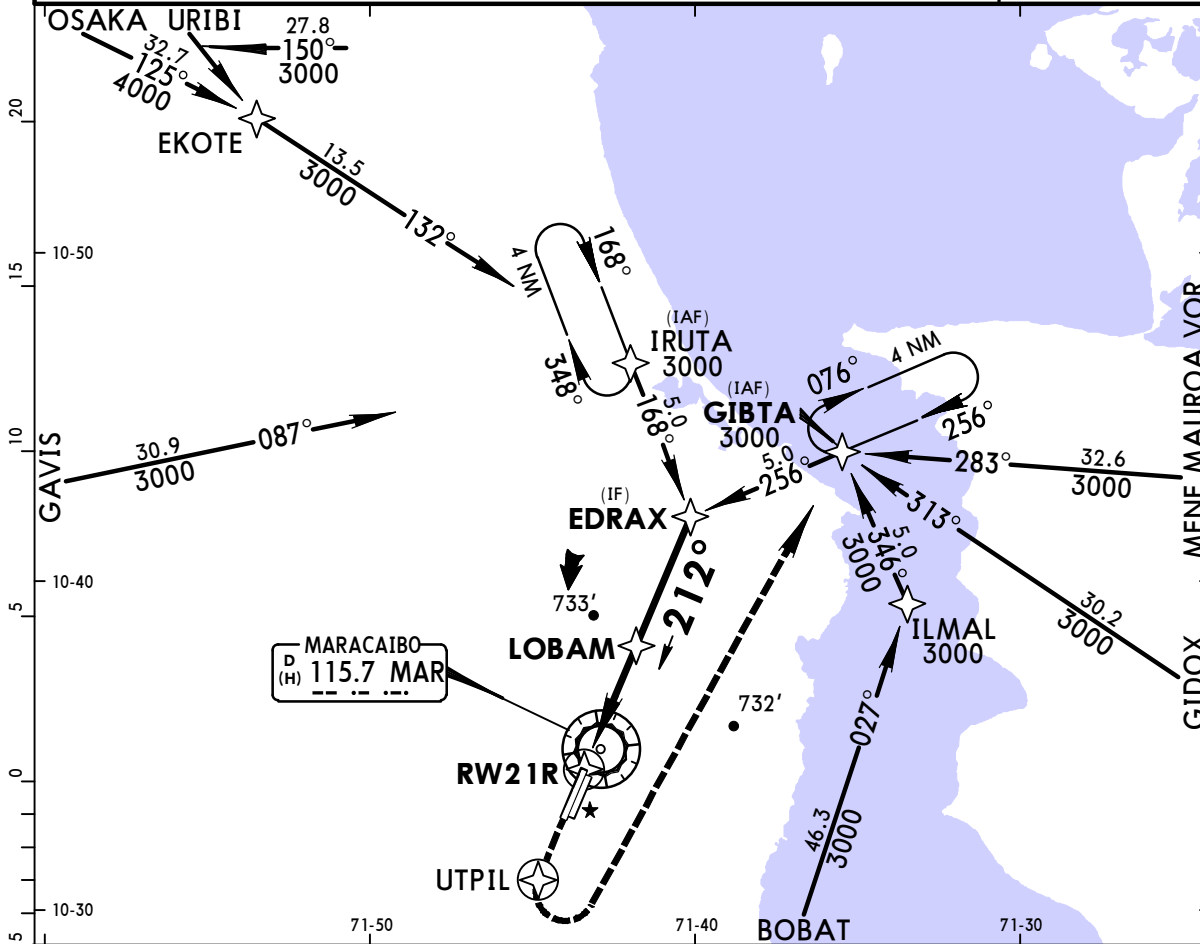
A	1.8 km
B	
C	
D	

**SVMC/MAR**  
**LA CHINITA INTL**

**JEPPESEN**  
21 APR 17  
Eff 27 Apr (12-5)

**MARACAIBO, VENEZUELA**  
**RNAV (GNSS) Y Rwy 21R**

MARACAIBO Approach		MARACAIBO Tower		Ground	
119.7	120.2	118.9		121.9	
RNAV	Final Apch Crs <b>212°</b>	Minimum Alt <b>LOBAM</b> 1600' (1361')	LNAV MDA(H) <b>590'</b> (351')	Apt Elev <b>239'</b> Rwy 21R <b>239'</b>	1800'  MSA MAR VOR
<b>MISSED APCH:</b> Climb to 4000' direct UTPIL then climbing LEFT turn direct GIBTA and hold.					
Alt Set: hPa      Rwy Elev: 9 hPa      Trans level: By ATC      Trans alt: 4000' 1. GPS required.    2. Procedure not authorized when using remote altimeter setting. 3. DME-DME not authorized.					



Gnd speed-Kts	70	90	100	120	140	160	4000'	D → UTPIL
Descent Angle 3.00°	372	478	531	637	743	849		
MAP at RW21R								

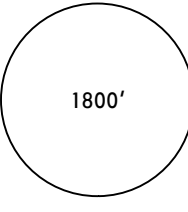
**STRAIGHT-IN LANDING RWY 21R**  
LNAV  
MDA(H) **590'** (351')

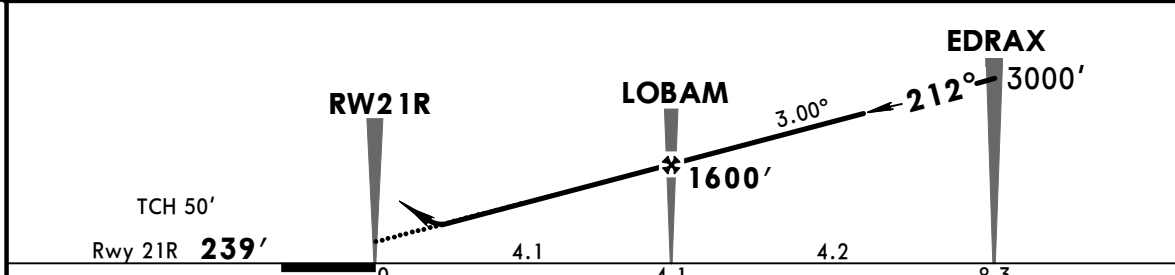
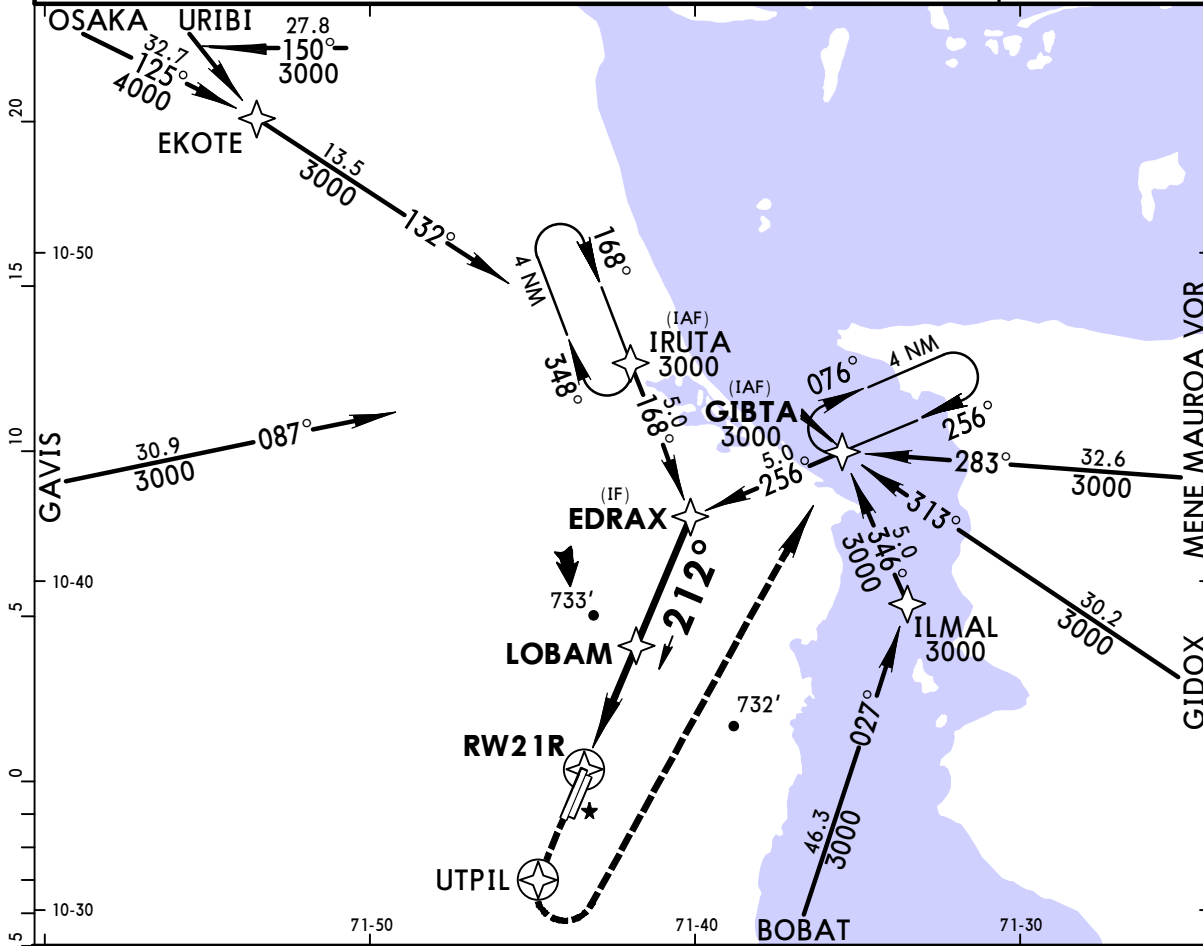
A  
B  
C  
D  
  
1.6 km

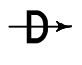
**SVMC/MAR**  
**LA CHINITA INTL**

**JEPPESEN**  
21 APR 17  
Eff 27 Apr (12-6)

**MARACAIBO, VENEZUELA**  
**RNAV (GNSS) Z Rwy 21R**

MARACAIBO Approach		MARACAIBO Tower		Ground	
119.7		120.2		118.9	
RNAV	Final Apch Crs <b>212°</b>	Minimum Alt <b>LOBAM</b> 1600' (1361')	LNAV/VNAV DA(H) <b>587'</b> (348')	Apt Elev <b>239'</b> Rwy 21R <b>239'</b>	 1800' MSA SVMC
<b>MISSED APCH: Climb to 4000' direct UTPIL then climbing LEFT turn direct GIBTA and hold.</b>					
Alt Set: hPa      Rwy Elev: 9 hPa      Trans level: By ATC      Trans alt: 4000' 1. GPS required.    2. Procedure not authorized when using remote altimeter setting. 3. DME-DME not authorized.					



Gnd speed-Kts	70	90	100	120	140	160	4000'		UTPIL
Descent Angle 3.00°	372	478	531	637	743	849			
MAP at DA									

**STRAIGHT-IN LANDING RWY 21R**  
**LNAV/VNAV**  
DA(H) **587'** (348')

A  
B  
C  
D

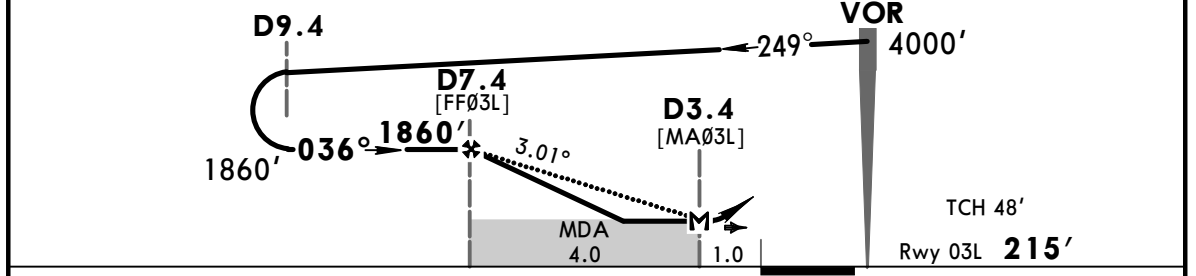
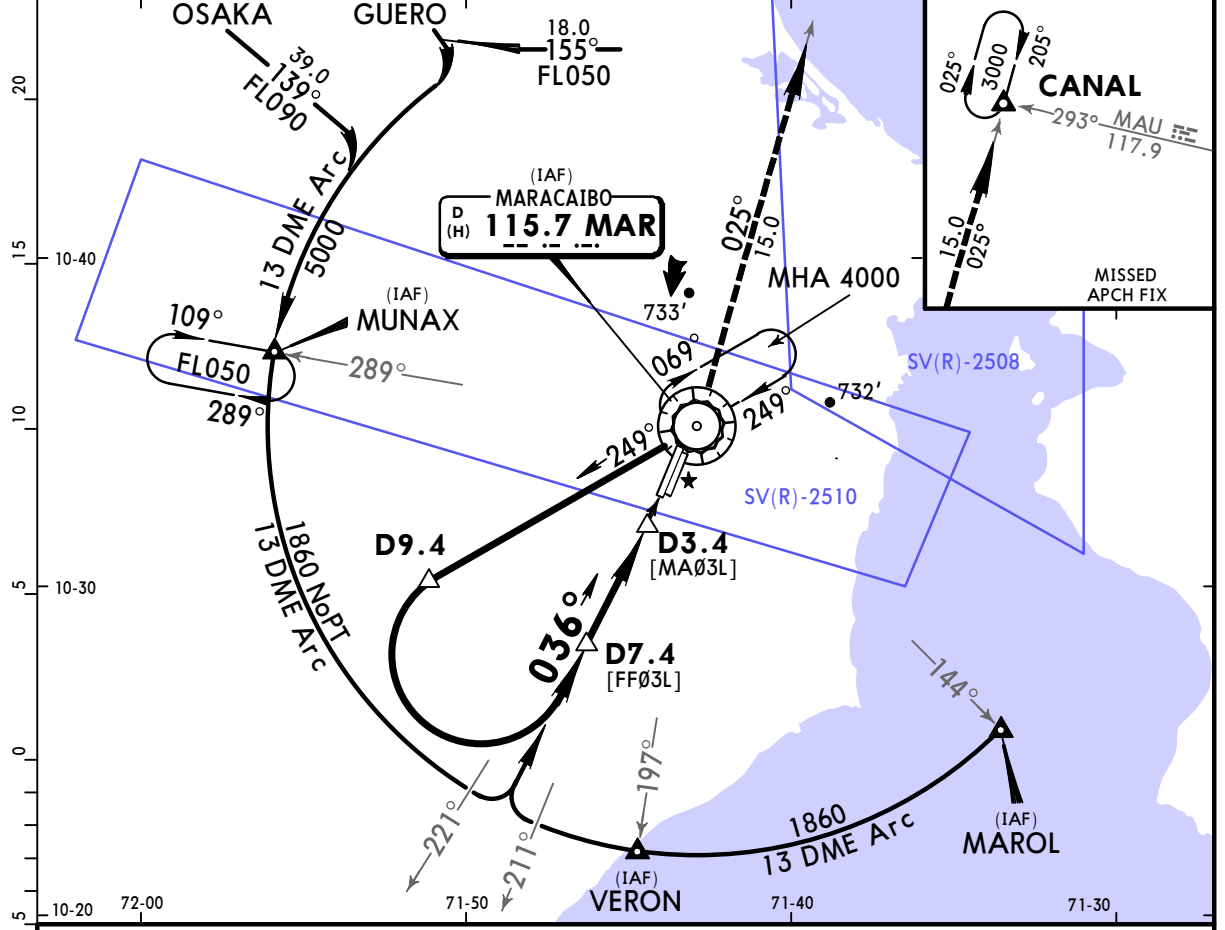
1.6 km

CHANGES: Bearings.

**SVMC/MAR**  
LA CHINITA INTL

**JEPPESEN MARACAIBO, VENEZUELA**  
21 APR 17 (13-1) Eff 27 Apr VOR DME Rwy 03L

MARACAIBO Approach		MARACAIBO Tower			Ground
119.7	120.2	118.9		121.9	
VOR MAR <b>115.7</b>	Final Apch Crs <b>036°</b>	Minimum Alt <b>D7.4</b> <b>1860'</b> (1645')	MDA(H) <b>590'</b> (375')	Apt Elev <b>239'</b>	1800'
Rwy 03L <b>215'</b>					
<b>MISSED APCH:</b> Climb to 3000' outbound on MAR VOR R-025 to CANAL and hold or as directed by ATC.					
Alt Set: hPa	Rwy Elev: 8 hPa	Trans level: By ATC	Trans alt: 4000'	MSA MAR VOR	



Gnd speed-Kts	70	90	100	120	140	160	ALS PAPI	3000'	MAR R-025	CANAL
Descent Angle	3.01°	373	479	533	639	852				
MAP at D3.4 or D7.4 to MAP	4.0	3:26	2:40	2:24	2:00	1:43	1:30			

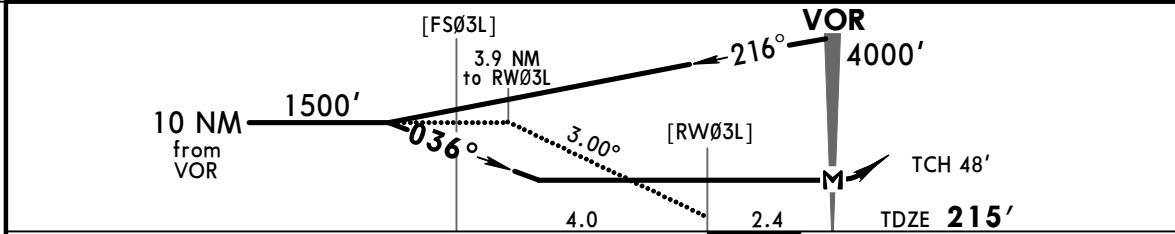
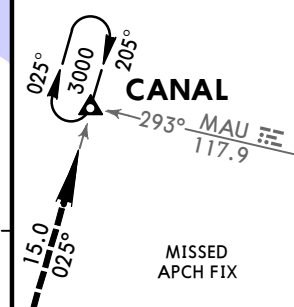
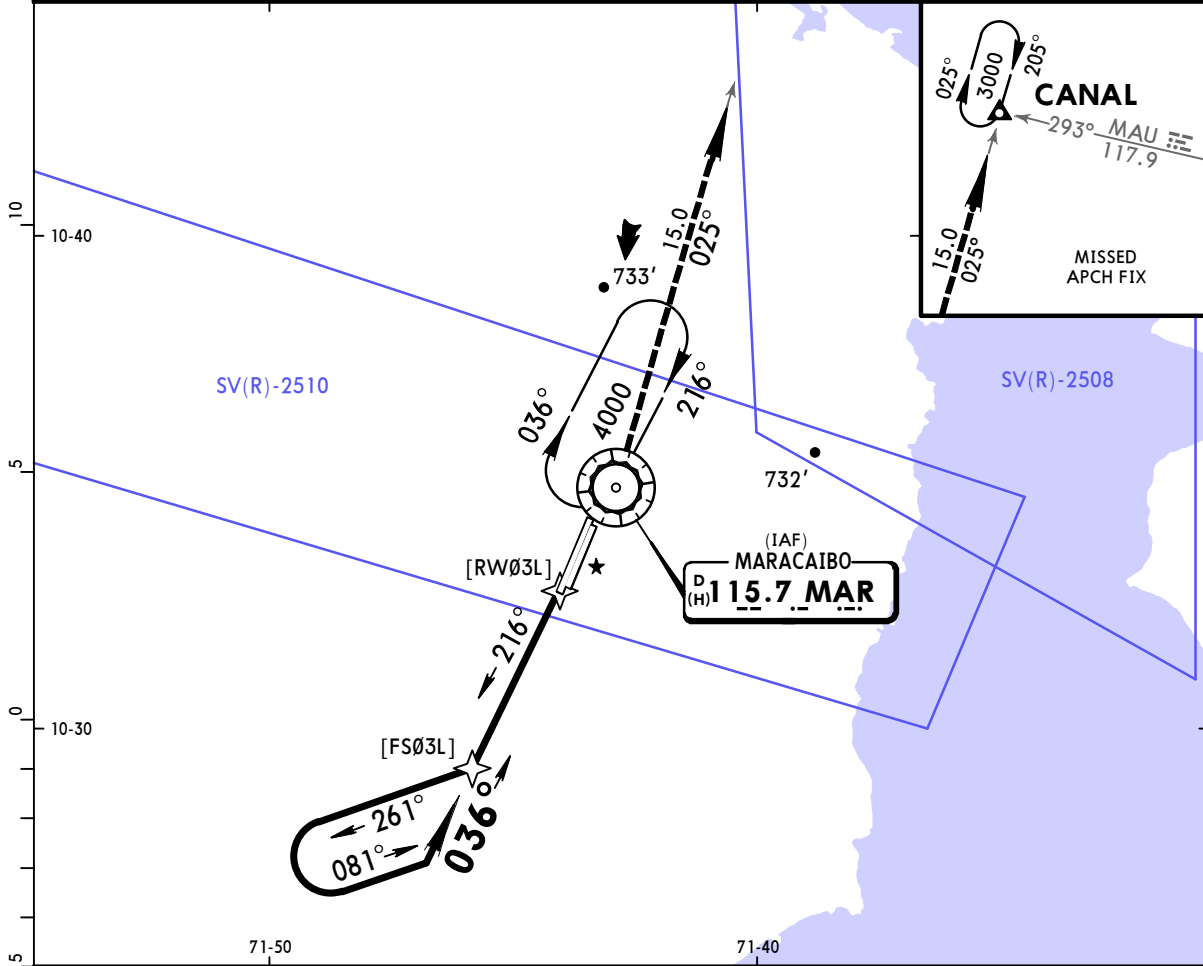
STRAIGHT-IN LANDING RWY 03L			CIRCLE-TO-LAND		
MDA(H) <b>590'</b> (375')			MDA(H)		
		ALS out	Max Kts		
A	1.6 km		100	680'	(441') -1.6 km
B	2.4 km		135	740'	(501') -1.6 km
C	2.8 km		180	830'	(591') -2.4 km
D	2.8 km		205	930'	(691') -3.6 km



**SVMC/MAR**  
LA CHINITA INTL

**JEPPESEN MARACAIBO, VENEZUELA**  
21 APR 17 **13-2** Eff 27 Apr  
**VOR Rwy 03L**

MARACAIBO Approach		MARACAIBO Tower		Ground	
119.7	120.2	118.9		121.9	
VOR MAR <b>115.7</b>	Final Apch Crs <b>036°</b>	No FAF	MDA(H) <b>680'</b> (465')	Apt Elev <b>239'</b>	1800'
MISSED APCH: Climb to 3000' outbound on MAR VOR R-025 to CANAL and hold or as directed by ATC.					
Alt Set: hPa	Rwy Elev: 8 hPa	Trans level: By ATC		Trans alt: 4000'	MSA MAR VOR



Gnd Speed-Kts	70	90	100	120	140	160	ALS PAPI	3000' on MAR R-025 CANAL
Descent Angle	3.00°	372	478	531	637	743		
MAP at VOR								

STRAIGHT-IN LANDING RWY 03L			CIRCLE-TO-LAND		
MDA(H) <b>680'</b> (465')			MDA(H)		
	ALS out	Max Kts			
A	1.6 km	100	680' (441') - 1.6 km		
B	1.6 km	135	740' (501') - 1.6 km		
C	2.0 km	180	830' (591') - 2.4 km		
D	2.4 km	205	930' (691') - 3.6 km		